

LIVEO-530 PBK

5.25" WATERPROOF 2-WAY PASSIVE WALL-MOUNT SPEAKER PAIR, BLACK

Liveo series combines simplicity and elegance with sturdiness and ease of installation. Whether outdoor or indoor, low-impedance or constant-voltage line, Liveo guarantees the right solution for every application.

The housing, with minimalist and elegant lines, is made of Polypropylene with UV-resistant treatment; this ensures robustness and greater durability to exposure to sun, moisture and rain. Plastic woofer, Mylar tweeter and plastic cover of rear connections make these speakers completely waterproof. Both transducers are selected to offer not only waterproofness and high durability, but also an excellent level of audio quality.

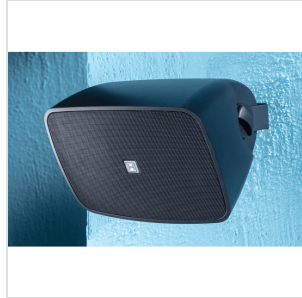
The built-in line transformer allows the speaker to be adapted to both constant-voltage - with 4 selectable power levels - and low-impedance systems.

Each Liveo series speaker, in order to simplify installation as much as possible, comes with both a "C" bracket and a "ball-shaped" bracket, both with adjustable horizontal and vertical positions.



LIVEO-530 PBK

5.25" WATERPROOF 2-WAY PASSIVE WALL-MOUNT SPEAKER PAIR, BLACK



LIVEO-530 PBK

5.25" WATERPROOF 2-WAY PASSIVE WALL-MOUNT SPEAKER PAIR, BLACK

HIGHLIGHTS



WEATHER-RESISTANT TRANSDUCERS

Woofer and Dome Tweeter are made of water-resistant materials to allow use in outdoor places exposed to rain and moisture. Material type and thicknesses of the external parts have been designed to maintain a good frequency linearity and dynamic response.

DETAILS DESIGNED FOR A LONG-LIFE CYCLE

All materials are designed to increase speaker life cycle, even when installed in outdoor environments without protections. The cabinet and rubber covers are made of UV-resistant plastic material. The front grille is in aluminum with treatment against atmospheric agents, and the fixing screws are in stainless steel.



LIVEO-530 PBK

5.25" WATERPROOF 2-WAY PASSIVE WALL-MOUNT SPEAKER PAIR, BLACK



DESIGNED FOR EASY INSTALLATION IN ANY CONDITION

Each Liveo series speaker comes with two brackets for wall mounting. You can choose to use either the pan/tilt adjustable "C" bracket designed to mount the speaker mainly in a horizontal position; or the ball-shaped bracket that allows larger horizontal/vertical adjustment angles than the C bracket and is designed for mounting the speaker horizontally.

In addition to the screws and washers for attaching the brackets to the speaker, two hex wrenches and a steel safety cable are included for each case.

GRILLE WITH ROTATABLE LOGO

The logo in the center of the grille can be rotated by a simple spring mechanism to fit perfectly in both horizontal and vertical installation.



LIVEO-530 PBK

5.25" WATERPROOF 2-WAY PASSIVE WALL-MOUNT SPEAKER PAIR, BLACK

PRODUCT DETAILS

KEY FEATURES

2-Way Passive with 30W RMS Power

IP65 Protection Rating for Outdoor/Indoor Applications

Available in Black or White Finish

UV-Resistant PP Housing

Built-in 70V/100V Line Transformer

Power Tap Selector for 70/100V or low-impedance systems

Horizontal and Vertical adjustable C-Bracket and Ball-Shaped bracket

Security Wire included

Paintable Housing and Grille

SPECIFICATIONS

Speaker Type	2-Way Passive
IP Rating	IP65
RMS Power (@ 8ohm)	30W
Program Power (@ 8ohm)	60W
Frequency Response (-10dB)	60Hz-20kHz
Sensitivity (1w@1m)	85dB
Impedance	8ohm
Woofers	5.25" (135mm), PP cone

LIVEO-530 PBK

5.25" WATERPROOF 2-WAY PASSIVE WALL-MOUNT SPEAKER PAIR, BLACK

Tweeter	0.5" (13mm), Mylar dome
Crossover Frequency	3.5kHz
70/100V Line Transformer with Power Tap Selector	(100V) 16W, 8W, 4W, 2W - (70V) 8W, 4W, 2W, 1W - 8?
Housing	UV-Resistant PP, paintable
Bracket	C-Bracket and Ball-shaped Bracket with Pan/Tilt adjustable angles and stainless-steel screws
Grille	Perforated aluminum, powder coated paint, acoustic transparent, paintable
Color	Black
Product Size – no bracket included (WxDxH)	156 x 156 x 227 mm (6.1 x 6.1 x 8.9 inch)
Speaker Weight (single unit, no bracket)	1.5kg – 3.3 lbs.
Packing Size (WxDxH) (pair)	420 x 195 x 255 mm (16.5 x 7.7 x 10.0 inch)
Packing Weight (pair)	3.9kg – 8.6 lbs.