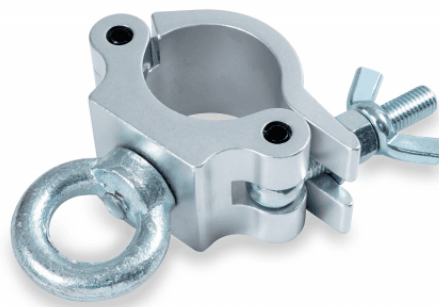


CLCB-53500S

ALUMINIUM CLAMP WITH 41-53 MM WITH RING 500 KG

Clamp for trusses with sections between 41 and 53 mm.

Maximum load 500 kg. and Ring



CLCB-53500S

ALUMINIUM CLAMP WITH 41-53 MM WITH RING 500 KG

PRODUCT DETAILS

KEY FEATURES

SPECIFICATIONS

Safe working load	500 kg
Fit tube Dimeter	Ø41-53 mm
Material	Aluminum
Surface Treatment	Polishing
Color	Aluminum
Ring	Alluminium