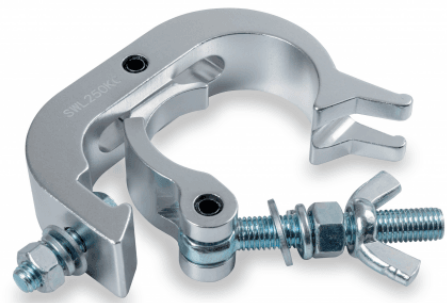


CLC-52250S

ALUMINIUM CLAMP 44-52 MM 250 KG

Clamp for trusses with sections between 44 and 52 mm.
Maximum load 250 kg.



CLC-52250S

ALUMINIUM CLAMP 44-52 MM 250 KG

PRODUCT DETAILS

KEY FEATURES

SPECIFICATIONS

Safe working load	250 kg
Fit tube Dimeter	Ø44-52 mm
Material	Aluminum
Surface Treatment	Polishing
Color	Aluminum
TUV Certified	Yes