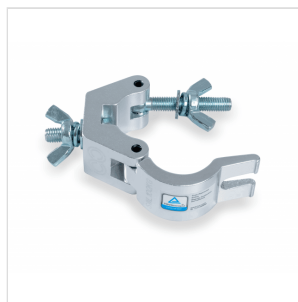
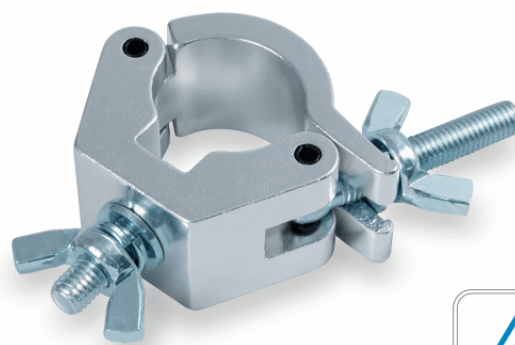


CLC-34100S

ALUMINIUM CLAMP 28-34 MM 100 KG

Clamp for trusses with sections between 28 and 34 mm.
Maximum load 100 kg.



CLC-34100S

ALUMINIUM CLAMP 28-34 MM 100 KG

PRODUCT DETAILS

KEY FEATURES

SPECIFICATIONS

Safe working load	100 kg
Fit tube Dimeter	Ø28-34 mm
Material	Aluminum
Surface Treatment	Polishing
Color	Aluminum
TUV Certified	Yes