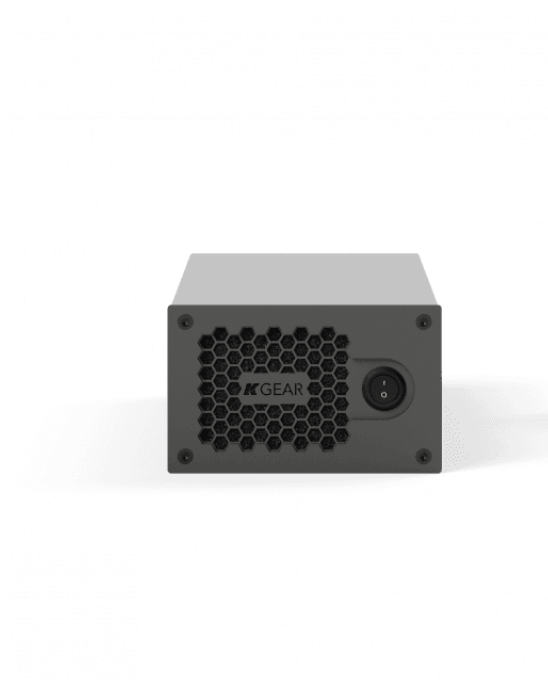


GA46L

K-GEAR GA46 4X1500W AMPLIFIER

<p>Compact 4-ch high efficiency amplifier featuring Powersoft DSP and power module. Designed for high performance applications both for rental and permanent installations such as touring, large auditoriums, stadiums, theme parks and clubs. This amplifier can also drive 70V-100V lines without any additional transformer or settings.</p>

<p>Thanks to its modular design, 3 elements of GA46 can fit into 2 rack units with a dedicated adapter. </p>



GA46L

K-GEAR GA46 4X1500W AMPLIFIER

PRODUCT DETAILS

KEY FEATURES

Four Channel Amplifier

Compact and modular design

Fits both high-end fixed installations and rental

Use G-RACK to fit in a 2U Rack

Volume control Knob

SPECIFICATIONS

Input Channels	2
Output Channels	4
Max Output Power per Channel	1,500 Watt (RMS EIAJ Single Channel Driven @ 4 ohm)
Minimum Impedance	4? (2? bgm use)
High Impedance Speaker Lines	70V-100V
Internal DSP	28 bit data path with 56 bit inner processing
Operating Voltage	85-264 VAC
AC Current	10A Nominal
Dimensions WxHxD	195mm x 90mm x 418mm
INPUT	Analog Balanced 2x Combo jack-XLR female line
Power OUTPUT	2 x Speakon out (4 pole)