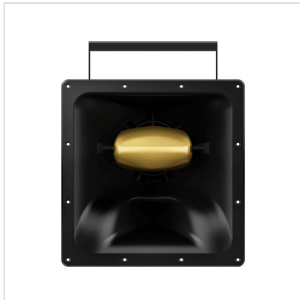


XY-2

8" TWO-WAY PASSIVE MID-HIGH LOUDSPEAKER

The XY-2 speaker is the mid-high section of the XY-3B. Designed specifically for large-scale venues and Stadiums, the XY-2 can be used for PA applications, as a DJ booth monitor or as a down fill in an XY-3B cluster setting.



XY-2

8" TWO-WAY PASSIVE MID-HIGH LOUDSPEAKER

PRODUCT DETAILS

KEY FEATURES

8" two-way Passive mid-high loudspeaker

Moulded Bi-horn

X-Phase system with gold X-Phase plug

SPECIFICATIONS

Frequency response 170 Hz-17 kHz

Sensitivity (1W/1m) 107 dB

Nominal Impedance 8 Ω

Transformer taps MF 8-inch neodymium cone driver, HF 1-inch exit neodymium compression driver

Power Handling 200 W(RMS), 400 W(Program)

Power Handling AES 130 dB(cont.), 136 dB(peak)

Dispersion speakON® NL4 x 2

Enclosure Polyurethane

Dimensions (WxHxD) 480x480x376 mm

Weight 13.5 kg