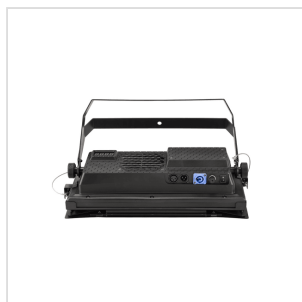
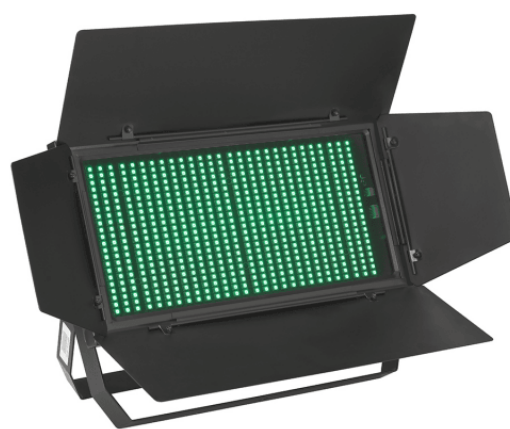


LIGHTBLASTER 616 RGB HIGH BRIGHTNESS RGB LED STROBE & WASH LIGHT WITH BARNDOOR

LIGHTBLASTER 616 RGB is a high brightness strobo & wash light that combines reliability, lifespan, and brilliance of the RGB 3in1 LEDs with the low power consumption of LED technology. Beam angle is 110° but, thanks to the supplied barndoor (removable), it is possible to reduce it to 0°. Its light source consists of 616 high-brightness long lifetime RGB 3in1 0.5W LEDs. Electronic dimming control and Strobe function offer, respectively, 5 different curves and 5 different strobo effects, to adapt this fixture to any type of use. The internal temperature is controlled by sensors that, in case of overheating, lower power to 50% and adjust cooling fan speed. The result is a powerful yet extremely silent strobo-light. Not only, but the robust ABS housing makes it lightweight, durable and with an excellent value in its market range.



LIGHTBLASTER 616 RGB HIGH BRIGHTNESS RGB LED STROBE & WASH LIGHT WITH BARNDOOR

PRODUCT DETAILS

KEY FEATURES

616 pcs 0.5W High-Brightness RGB 3in1 LED

110° Beam Angle

5 Dimmer Curves and 5 Strobe Effects

DMX512/Manual/Master-Slave/Sound Control Modes

Selectable 10 and 5 DMX Channel Modes

Intelligent Cooling System with Variable Speed Fan

Controlled Fan Noise with maximum 43dB noise

Easy-to-use Front Panel with 4-digit Led Display

Barndoor included (Removable)

SPECIFICATIONS

Light source 616pcs 0.5W RGB 3in1 Led

Beam Angle 110°

Dimmer 5 Dimmer Curves

Strobe 1-30Hz with 5 Effect Types

Control Mode DMX512/Manual/Master-Slave/Sound

DMX Channel Modes 10/5CH (switchable)

Cooling System Forced cooling with variable-speed fan

LIGHTBLASTER 616 RGB HIGH BRIGHTNESS RGB LED STROBE & WASH LIGHT WITH BARNDOOR

Over heat protection	when temperature is between 65 and 80°C, power consumption is 50%; when temperature is below 65°C, power consumption is 100%
Fan Noise	Fan speed automatically adjust according to machine internal temperature; maximum noise is 43.3dB (@ 1m)
Display	4-digit Led Display
DMX	XLR 3-pin connectors
Barndoor	Removable
IP Protection	IP20
Voltage	AC110V-240V
Frequency	50/60Hz
Machine Power	300W
Net weight	5kg (5.5kg with barndoor)
Fixture Size (WxDxH)	430 x 84 x 220 mm
Carton Size (WxDxH)	515 x 190 x 345 mm
Carton Weight	6.5 kg